

JUST A GENTLE TOUCH...



**REMOTE
CONTROL**



**SILENT
TOUCH**

OFFICE AUTOMATION



HOTEL AUTOMATION



HOME AUTOMATION



PRODUCT INFORMATION

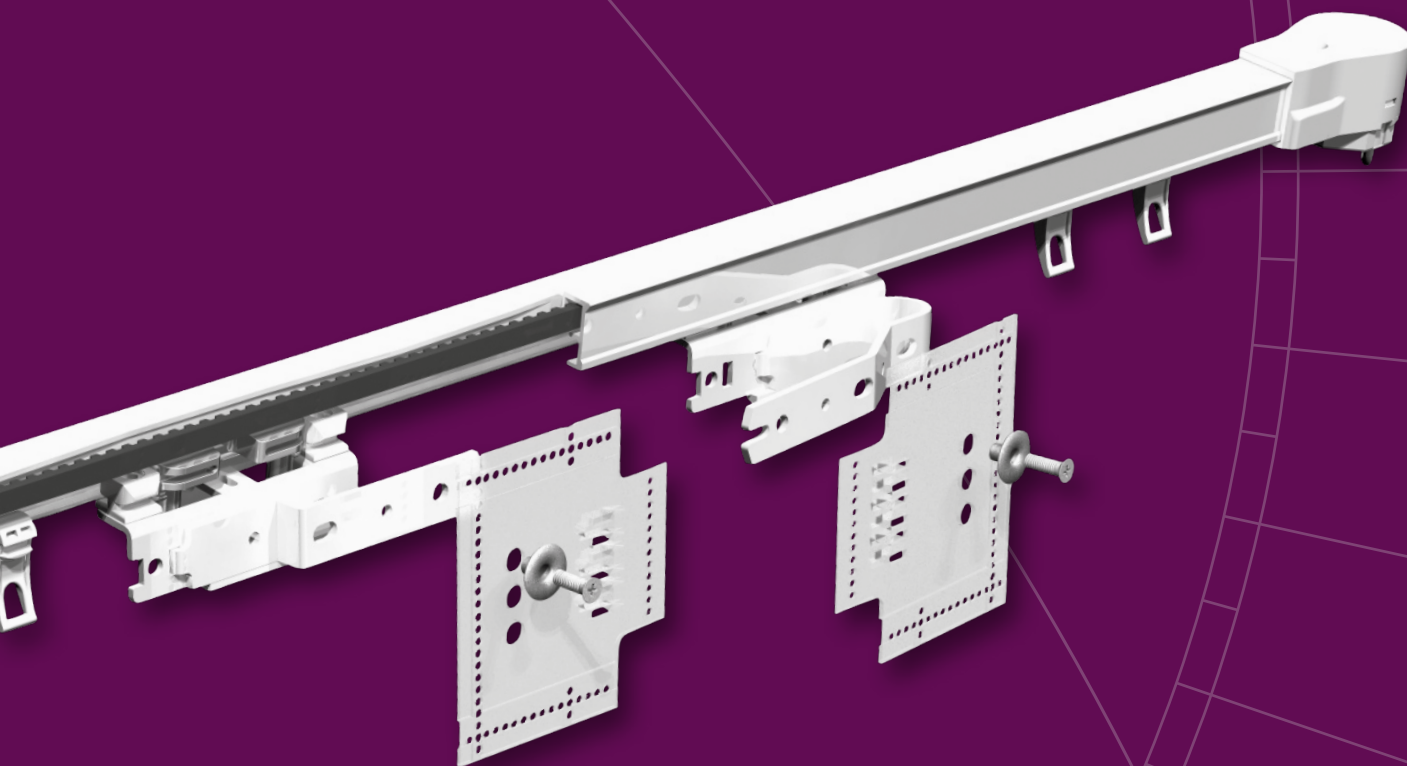
The Forest Shuttle motorized system is available in three types, Shuttle M, Shuttle L and Shuttle S. All three motors offer these functions:

- Touch Impulse Technology, gently pulling the curtain by hand will activate the motor (standard feature);
- Integrated Emergency Control with automatic de-clutch in case of power failure, to ensure a manual operation of the curtains (standard feature);
- Modular motor, different modules can be attached for various control options: Radio Frequency, Wall Switch, Infrared, Domotics, Building/Hotel Automation, Serial Communication, Z-wave, etc.;
- Ultra Silent motor;
- Slow start and slow stop;
- Full automatic setting of the limits;
- Programming of intermediate positions possible;
- Touch Impulse Sensitivity adjustable; high sensitivity, low sensitivity, and off;
- Stack-back position programmable to every desired setting;
- FMS track and components available in white and black;
- Clickable off-set carriers for a straight heading of the curtain; rolling carriers and FES Easyfold carriers also available;
- Kevlar based drive belt;
- All KS brackets applicable;
- Motors can also be used on MRS Motorized Rod System;
- Tandem motor application possible as well.



BOTTOM VIEW
FOREST SHUTTLE

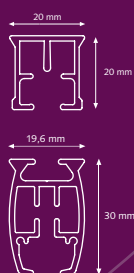




SPECIFICATIONS TRACK

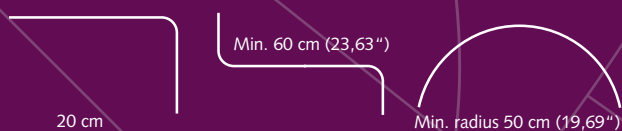
FMS Track: • Weight 303 gr /mtr
(3,25 ounce/ft.)
• Aluminium Extrusion
• Size 20 x 20 mm
(0.8 x 0.8 inch)

FMS Plus: • Weight 500 gr/mtr.
(5,36 ounce/ft.)
• Aluminium Extrusion
• Size 19,6x30 mm
(0.8x1.2 Inch)



BENDING / CURVING

The motor can be used in a track with one or two bends of 90 degrees. The track can be bended and reversed bended with a radius of 20 cm (8"). Continuous curving can be done with the Electric Powered Bender.



CONTROL OPTIONS

BUILDING AUTOMATION



Designed for use in any building automation system through the integrated dry contact port in the motor. 230V direct control is possible with the optional Dry Contact Relay. The BUS ports allow for individual and group controls of the motors.

TOUCH IMPULSE TECHNOLOGY



A gentle pull will activate the curtain thanks to the smart Touch Impulse Technology of the motor. Standard feature.

INTEGRATED EMERGENCY CONTROL



In case of power failure, the curtain can still be moved manually. Standard feature.

MULTI DIAMOND REMOTE CONTROL



Available in white and black, can be used to control all forest motorized window decoration systems. With 6 individually channels or in 1 group.

Z-WAVE DOMOTICA CONTROL



Wireless Domotics communication with data feedback and automatic routing in a mesh-network environment. Open protocol with "Scene Control". Works with the Forest Touch App for IOS and Android devices.

Detailed schedules on how to program the Forest Shuttle are included with the motor and can be found on our website www.forestgroup.com

FOREST PARTNERSHIPS



www.amx.com
In Concert Partner.



www.knx.nl
KNX partner



www.z-wave.com
Z Wave alliance partner



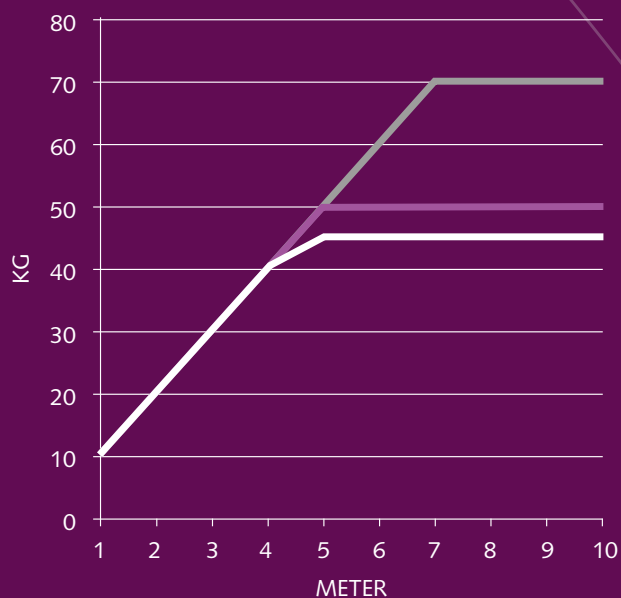
www.crestron.com
I2P partner



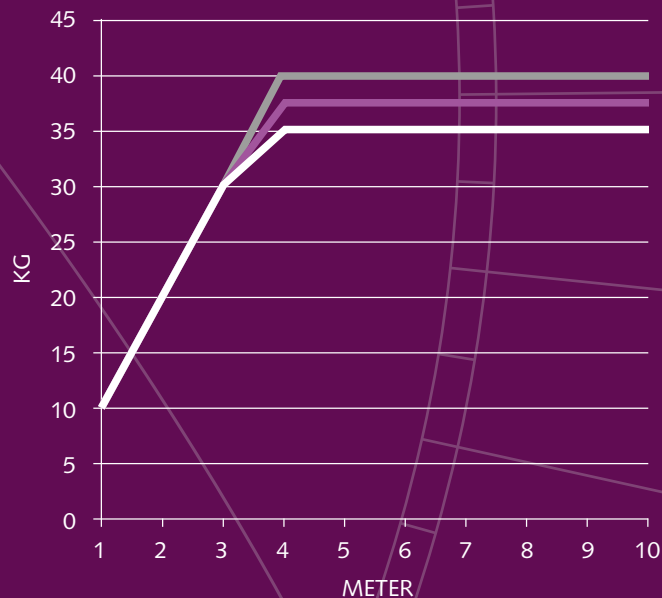
www.smart-homes.nl
Smart homes partner

The Forest® Shuttle is compatible with many other Building of Automation systems, thanks to its modular construction. A competitive advantage over the motorized drapery systems in the world!

SHUTTLE M LOAD TABLE:



SHUTTLE S/L LOAD TABLE:



- Straight
- One Bend/Curve
- Two Bends

	Shuttle M	Shuttle S	Shuttle L
Voltage Shuttle	24Vdc	24Vdc	100 - 240V~ 50 - 60Hz
RF Multi Receiver	Internal, optional	Internal	Internal
Power Supply	External, 100-240Vac – 1,5A - 50-60Hz; Output 24Vdc - 2,7A	External, 100 - 240Vac - 0,8A - 50 - 60Hz; Output 24Vdc - 2,5A	Internal
Max. power	65W	40W	40W
Torque:	1,5 Nm	1,0 Nm	1,0 Nm
Speed:	15 cm/s	14 – 17cm/s	14 – 17cm/s
Noise Level:	< 40 dB(A)	< 40 dB(A)	< 40 dB(A)
Max. curtain weight	70 kg	40 kg	40 kg
Dimensions Motor:	7 x 5 x 23 cm	7 x 5 x 20 cm	7 x 5 x 28 cm
Dimensions Power Supply	50 x 110 x 30 mm	50 x 80 x 30 mm	-
Protection degree	IP20	IP20	IP20
Max. running time	175 sec (in one direction)	240 sec (in one direction)	240 sec. (in one direction)
Certification & Marking:	CE/FCC	CE/FCC	CE/FCC

FOREST SHUTTLE 'S' & 'L'

FOREST SHUTTLE 'L' 230 VOLT AC



Motor with internal RF Multi Receiver and integrated 24 V power Supply 110 – 240 V. Touch Impulse and Emergency Control as standard.

Dimensions 7 x 5 x 28 cm 1/box

White 5232000001

Black 5232006001

With Z-wave receiver built-in 5232000002

FOREST SHUTTLE 'S' 24 VOLT DC



Motor with internal RF Multi Receiver, Touch Impulse and Emergency Control as standard. 24 V Power supply 110 – 240 V to be ordered separately.

Dimensions 7 x 5 x 20 cm

5232000000

1/box

POWER CABLE 4M

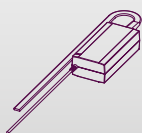
EU white 5201001104

black 5201006104

UK White 5201001134

1/box

FOREST ADAPTOR FOR SHUTTLE 'S'



Forest adaptor with support bracket for Shuttle 'S' motor 5232003002

1/box

Plugs available in versions: 1/box

EU 5201001101

UK 5201001131

AUS 5201001141

USA 5201001121

FOREST SHUTTLE 'M'

FOREST SHUTTLE MOTOR 24 VOLT DC



Strongest motor with standard Touch Impulse System and Emergency Control and with internal RF Multi Receiver. *Dimensions:*

7x5x23 cm (2.76x1.97x9.25") 1/box

White 5232000003

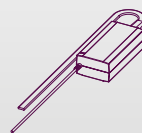
Black 5232006003

Without receiver built-in:

White 5231000000

Black 5231006000

FOREST ADAPTOR



Forest adaptor set complete 1/box

(eu) incl. wall bracket 5201002002

(uk) incl. wall bracket 5201002004

(uk) incl. wall bracket black 5201006002

(usa) incl. wall bracket 5201002005

SHUTTLE MULTI RECEIVER CLICK ON



To be used in case of no built-in receiver and with Diamond remote control. 5201001362

1/each

SHUTTLE Z-WAVE MODULE



Receiver to be used with a Z-wave remote control. 5201001750

1/box

FOREST Z-WAVE REMOTE CONTROL

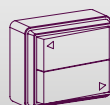


7-channel remote control with scene setting options.

5201001700

1/box

FOREST PULSE WALL SWITCH



Dimensions:
6,5 x 5,5 x 2,7 cm
(2.56 x 2.17 x 1.06")

5201001900

1/box

MULTI DIAMOND REMOTE CONTROL



5 + 1 channel remote control.

1/each

White 5201091460

Black 5201096460

MULTI WIRELESS WALL SWITCH



2-channel wall switch.

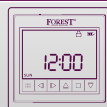
Dimension: 8,5 x 8,5 x 1 cm.

1/each

White 5201001480

Black 5201006480

FOREST MULTI WIRELESS SWITCH WITH TIMER



15 channels

1/each

White 5201001481

Black 5201006481

SHUTTLE INFRARED MODULE



Cordlength is 60cm.

5201001260

1/box

SHUTTLE INFRARED REMOTE CONTROL

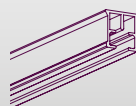


6 channel infrared remote control.

5201001250

1/box

FMS TRACK



Aluminium extrusion, powder coated black, lubricated. Available lengths:

5,80 m (19') 5101001580

7 m (23') 5101001700

7 m (23'), black 5101006700

7 m (23'), silver 5101003700

FMS CARRIER



"Clickable", offset, made of UV-resistant plastic. 10 Carriers on a break-away strip, can be clicked into the track after installation.

250/box

White 510101000

Black 510101000

Silver 510101000

FMS/CCS/MRS WHEEL CARRIER



The wheel carrier goes smoothly over a splice.

5210101002

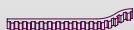
100/box

FMS TRACK JOINER



Used to make a solid connection between two pieces of track. 10/box
 White 2518401000
 Black 2518406000
 Silver 2518403000

FMS TRANSPORT BELT



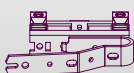
Toothed belt, to be installed inside the FMS Track. 5105501000
 100 mtr/roll

FMS MASTER CARRIER UNDERLAP



Multifunctional - arm is reversible for Click on stiffner 15/box
 White 5215801010
 Black 5215806010
 Silver 5215803010

FMS MASTER CARRIER OVERLAP



Multifunctional - arm is reversible for Click on stiffner 15/box
 White 5215901010
 Black 5215906010
 Silver 5215903010

UNDERLAP SINGLE R/L

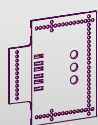


Multifunctional - arm is reversible - will slide trough curves. 15/box
 White 3016001000
 Black 3016006000

PROLONGED OVERLAP CLICK ON

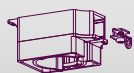
15 cm long. 15/box
 White 95000001010
 Black 95000006010

CLICK ON STIFFNER



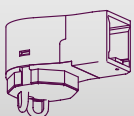
Recommended to attach to the FMS Master Carriers, stiffner to be stitched into the curtain. 5116001001
 15/box

FMS MOTOR PULLEY



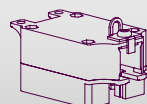
Connects motor with FMS Track. 1/box
 White 5103011000
 Black 5103016000
 Silver 5103013000

FMS RETURN PULLEY



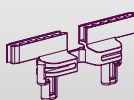
Reverses the FMS transport belt in the FMS Track. 1/box
 White 5103011100
 Black 5103016100
 Silver 5103013100

FMS MOTOR PULLEY UPSIDE DOWN



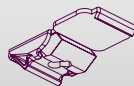
Can be used to place the motor upside down on the FMS track. 5103011003
 1/box

FMS CONNECTOR



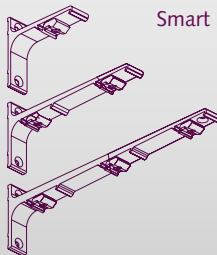
To fix the FMS Master Carrier onto the FMS transport belt. 50/box
 White 5103011500
 Black 5103016500
 Silver 5103013500

SMART KLIK CEILING BRACKET



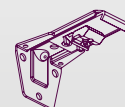
"Klicks" onto track, powder coated. 100/box
 White 1018201000
 Included Cover Cap 1018201001
 Black 1018206000
 Silver 1018203000

ALUMINIUM WALL BRACKET



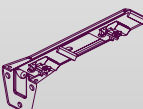
Smart Klick, powder coated. 1020301...
 7,5 cm single (3") 20/box
 10 cm single (4") 20/box
 15 cm double (6") 15/box
 20 cm double (8") 15/box
 25 cm triple (10") 10/box
 Colours: 01, 03, 06.

ADJUSTABLE WALL BRACKET SINGLE



Smart Klick, adjustable single 1020801115
 from 7,5 cm (3") to 100/box
 11,5 cm (4,5").

ADJUSTABLE WALL BRACKET DOUBLE



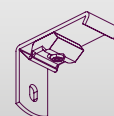
Smart Klick, adjustable double 1020801195
 from 6,5 cm (2,5") to 50/box
 10 cm (4") + 15 cm (6") to
 19,5 cm (7,5").

FSS METAL BRACKET



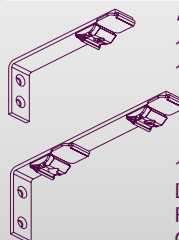
Strong bracket to fit the Forest Skylight System to the wall or ceiling. 7160001000
 100/box

SMART KLIK WALL BRACKET



3,5 cm (1,4") and 6 cm (2,4"). "Klicks" onto track, powder coated. One screw attachment. For light weight use only. Colours: 01, 03, 06. 50/box
 10202...035
 10202...060

SMART KLIK WALL BRACKET



"Klicks" onto track. 10202... mm
 10 cm (4"), 12,5 cm (5"), 20/box
 15 cm (6"), 20 cm (8"), 15/box
 25 cm (10") and 30 cm (12") 10/box
 with support.

15 cm (6"), 20 cm (8")
 Double track. 10206... mm
 For light weight use only. 15/box
 Colours: 01, 03, 06.

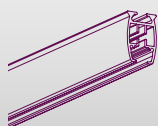
FOREST LUBRICANT



To lubricate components during assembly. 1/box
 5109010000

FMS PLUS

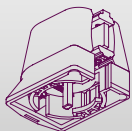
FMS PLUS TRACK



Aluminium extrusion
Available length : 7 m (23')
White
Black

5/bundle
5131001700
5131006700

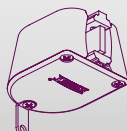
FMS PLUS MOTOR PULLEY



Connects motor with FMS
PLUS track
White
Black

1/box
5133011000
5133016000

FMS PLUS RETURN PULLEY



Reverses the FMS Plus belt in
the FMS Plus track
White
Black

1/box
5133011100
5133016100

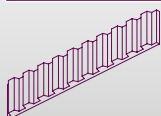
FMS PLUS MOTOR PULLEY UPSIDE DOWN



Can be used to place the
motor upside down
White

1/box
5133011003

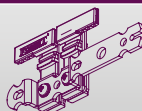
FMS PLUS TRANSPORT BELT



Toothed belt to be installed
inside FMS Plus track

100 mtr/roll
5135501000

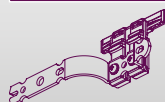
FMS PLUS MASTER CARRIER UNDERLAP



Arm is reversible
White
Black

10/box
5135801000
5135806000

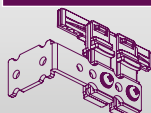
FMS PLUS MASTER CARRIER OVERLAP



Arm is reversible
White
Black

10/box
5135901000
5135906000

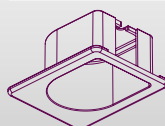
FMS PLUS MASTER CARRIER EASY FLEX L&R



White

10/box
5135901010

FMS PLUS RECESS COVERPLATE



Coverplate for recess; motor
and return pulley
White

1/box
5133011104

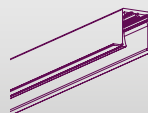
FMS PLUS RECESS COVERPLATE UPSIDE DOWN



Coverplate for recess; motor
pulley
White

1/box
5133011004

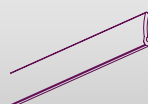
FMS PLUS RECESS PROFILE



Pre-drilled
Combine with fixing strip
White

7 mtr (23')
5002001701

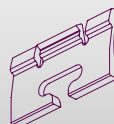
FMS PLUS RECESS PROFILE FIXING STRIP



Combine with profile
White

6 mtr (20')
5131001600

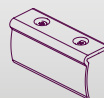
FMS PLUS PROFILE WEDGE



To fix the track into the profile

10/box
5131001100

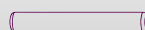
FMS PLUS / MTS TRACK BRIDGE



To join two pieces of track;
6,5 cm White
28 cm White

10/box
4518701000
4518601000

FMS PLUS / KS TRACK CONNECTORPIN



Stainless steel, 2 x 20 mm
For a firm seamless con-
nection

50/box
9900000012

CONTRACT BENDING TOOL



1/each
2550000000

FMS PLUS BENDING SET

For use together with
bending tool. Including
strips.

1/each
5131000000

FOREST
— DRAPERY HARDWARE —

